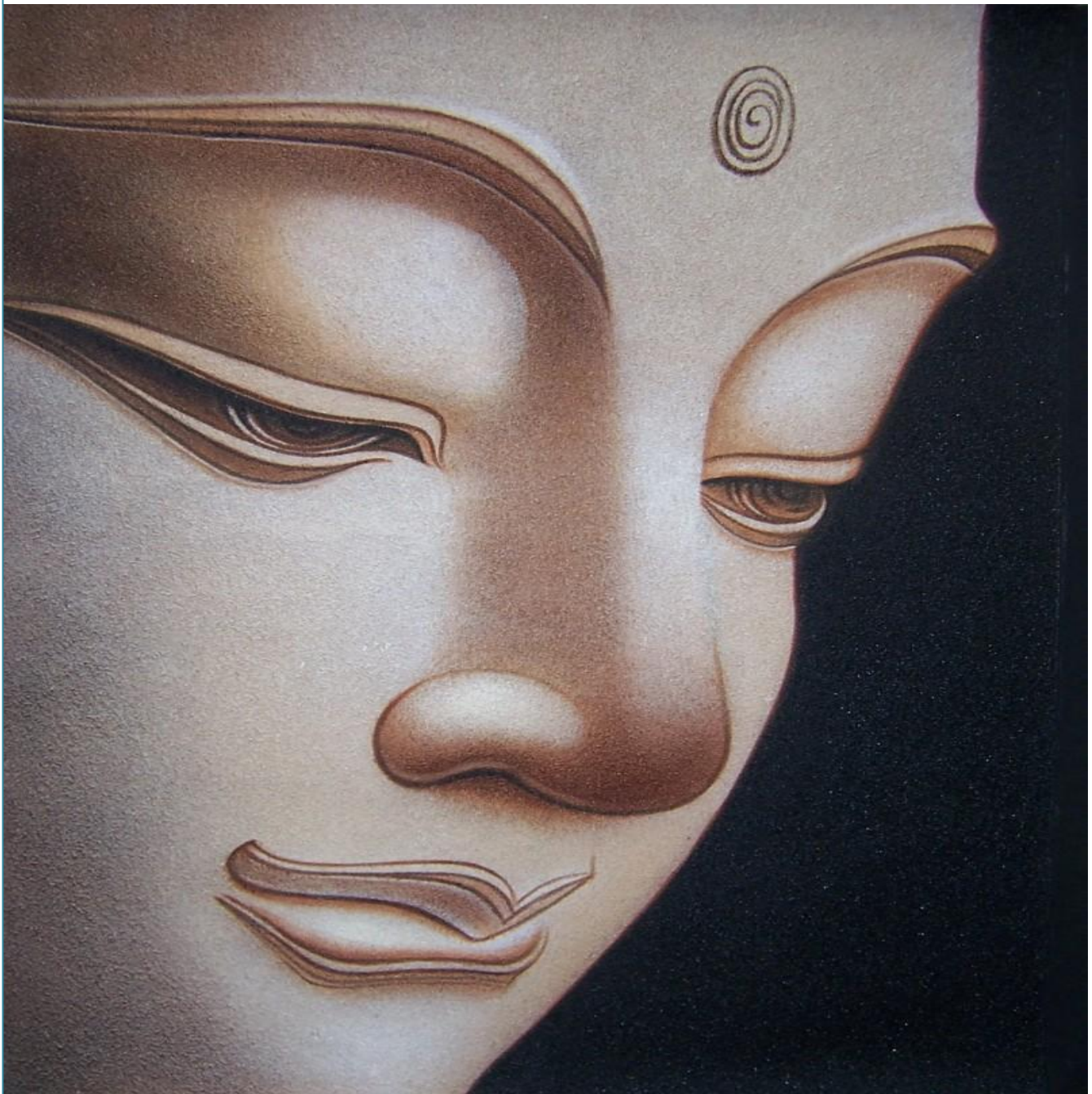


Citta (Consciousness)

by Nalini Galmangoda
(Diploma in Theravada Buddhism)



"The Highest gift all gifts is the gift of Dhamma"

-Lord Buddha-

Citta (Consciousness) : 89/121 Types

Note: This is only a summarized version of the lesson on Citta. You are advised to read your text books and other reading materials to get a detailed overview about Citta.

Classifications of Citta according to the Planes of existence.

The citta arising in beings of different worlds are different. First we'll look at the different types of worlds or planes of existence.

- Kama Bhumi - 11

- Niraya
 - Tirsan
 - Peta
 - Asura
 - Human World
 - Chaturmaharajika
 - Tavatimsa
 - Yama
 - Tusita
 - Nirmanarati
 - Paranimmitavasavarti
- } Four Hells
- } Six Heavens

- Rupa Bhumi - 16

Rebirth in these planes is possible only by attaining Jhana (absorption, a higher state of mind). Jhana can be attained through Samatha (Tranquility) meditation.

1st Jhana Plane

- Brahma Parisajja
- Brahma Purohita
- Maha Brahma

2nd Jhana Plane

- Parittabha
- Appamanabha
- Abhassara

3rd Jhana Plane

- Parittasubha
- Appamanasubha
- Subhakinna

4th Jhana Plane

- Vehapphala
- Asannasatta

Panca suddhavasa

- Aviha
- Atappa
- Sudassa
- Sudassi
- Akanitta

- Arupa Bhumi - 04

In these planes only the mind exists.

- Akasanancayatana bhumi
- Vinnanancayatana bhumi
- Akincannayatana bhumi
- Nevasanna nasannayatana bhumi

The 89/121 types of citta are classified according to the above mentioned planes of existence as follows:

- Kamavacara citta - 54 (arise in Kama bhumi)
- Rupavacara citta - 15 (arise in Rupa bhumi)
- Arupavacara citta - 12 (arise in Arupa bhumi)
- Lokuttara citta - 08/40 (no planes of existence)

Kamavacara Citta (Sense Sphere Consciousness) : 54

The 54 Kamavacara citta are classified as follows;

- Akusala Citta - 12
 - Loba mula citta – 8
 - Dosa mula Citta – 2
 - Moha mula citta – 2
$$\frac{\quad}{12}$$

- Ahetuka Citta - 18
 - Akusala Vipaka Citta – 7
 - Ahetuka Kusala Vipaka Citta – 8
 - Ahetuka Kiriya Citta - 3
$$\frac{\quad}{18}$$

- Sobana Citta - 24
 - Kamavacara Kusala Citta - 8
 - Kamavacara Vipaka Citta - 8
 - Kamavacara Kiriya Citta - 8
- 24

Rupavacara Citta (Fine material Consciousness) : 15

Following are the classifications of 15 Rupavacara Citta.

- Kusala Citta - 5
These Citta are developed by Putujjana (Worldings) and Sekhas (Person who has attained Sotapatti, Sakadagami or Anagami)
- Vipaka Citta - 5
Arise only in the Rupa Brahma as Patisandi Citta
- Kiriya Citta - 5
Arise only in Arahants who attain Jhanas

Arupavacara Citta (Immaterial Consciousness) : 12

The 12 Arupavacara Citta are classified as follows.

- Kusala Citta - 4
- Vipaka Citta - 4
- Kiriya Citta - 4

Lokuttara Citta (Supra mundane Consciousness) : 8 or 40

These Citta arise in a person who has entered the path to Nibbana (Sotapatti, Sakadagami, Anagami or Arahant). Each of these four stages have two steps as Magga and Phala.

The 8 Lokuttara Citta are as follows.

- Lokuttara Magga Citta - 4
 1. Sotapatti magga Citta
 2. Sakadagami magga Citta
 3. Anagami magga Citta
 4. Arahant magga Citta

- Lokuttara Phala Citta - 4
 1. Sotapatti phala Citta
 2. Sakadagami phala Citta
 3. Anagami phala Citta
 4. Arahant phala Citta

For a person who attain Magga or Phala Citta after attaining Jhanas these 8 Citta becomes 40. For each of the five Jhanas there will be a Magga Citta and a Phala Citta. Therefore 8 Lokuttara Citta x 5 Jhana becomes 40 Lokuttara Citta.

The main categories of citta and their sub categories are summarized in the following diagram.

